



Belmont Park Holymoore Road

Holymoorside, Chesterfield, S42 7DN

£1,400 PCM



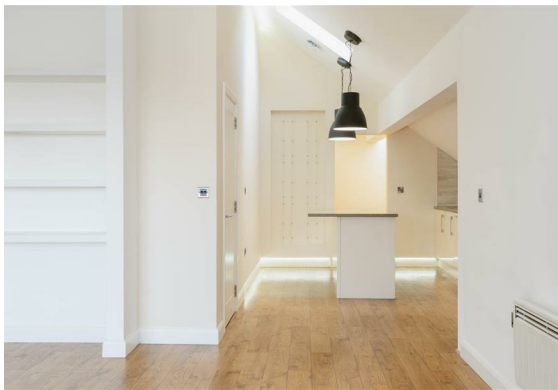
Belmont Park Holymoore

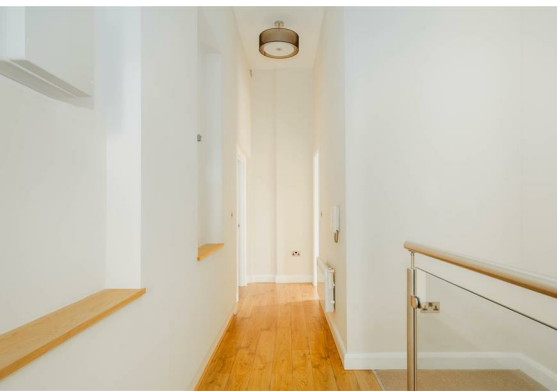
Holymoorside, Chesterfield, S42

75M

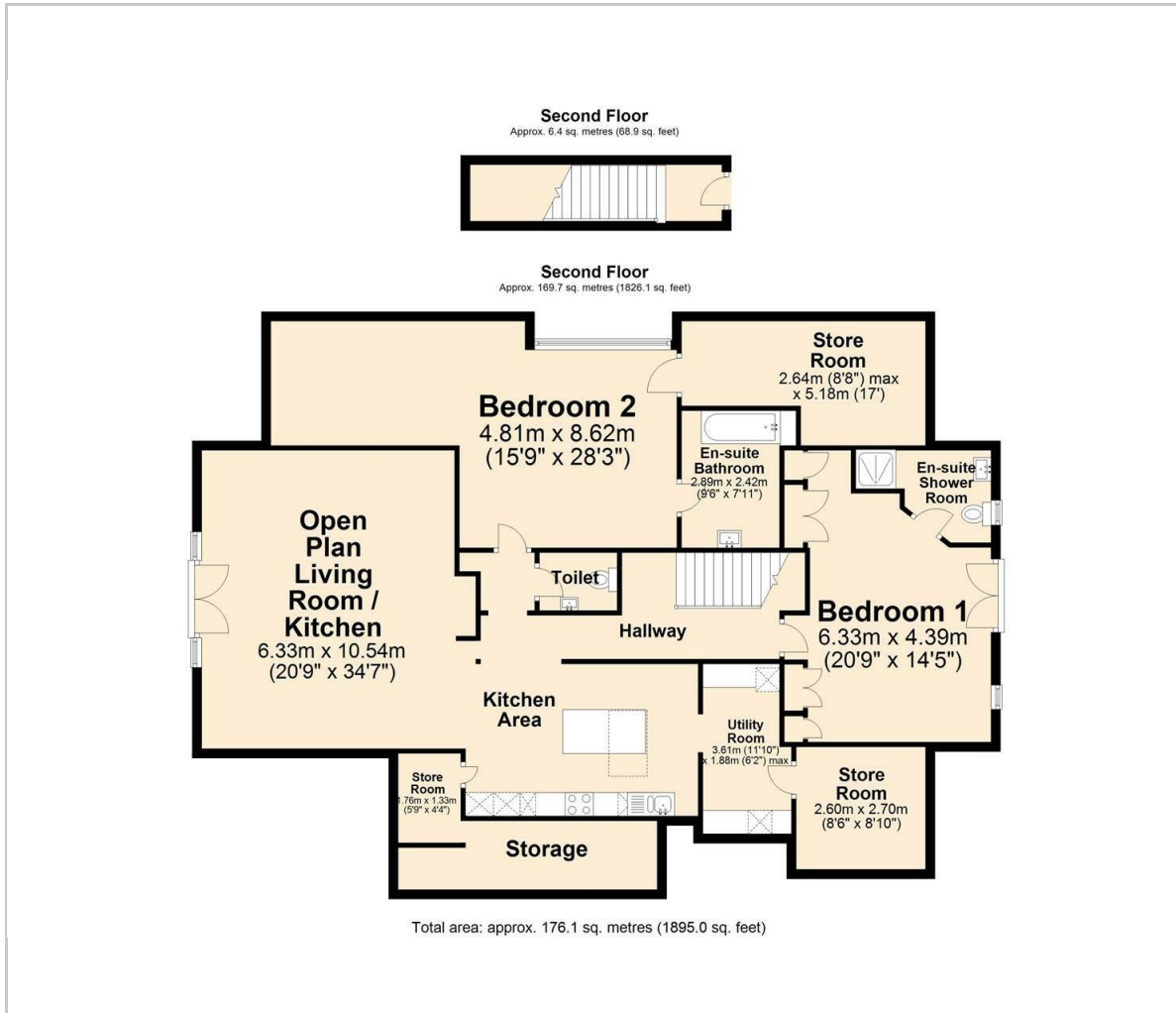
A stunning penthouse apartment, enjoying far reaching views, set within beautiful grounds at one of Derbyshire's most sought after development locations. Offering 1895 sqft of accommodation and featuring an island kitchen with modern integrated appliances, grand open-plan living room, two very generous bedrooms and modern bathrooms. The apartment also benefits from use of the communal grounds and allocated parking for two cars.

Rental information





Floor Plan

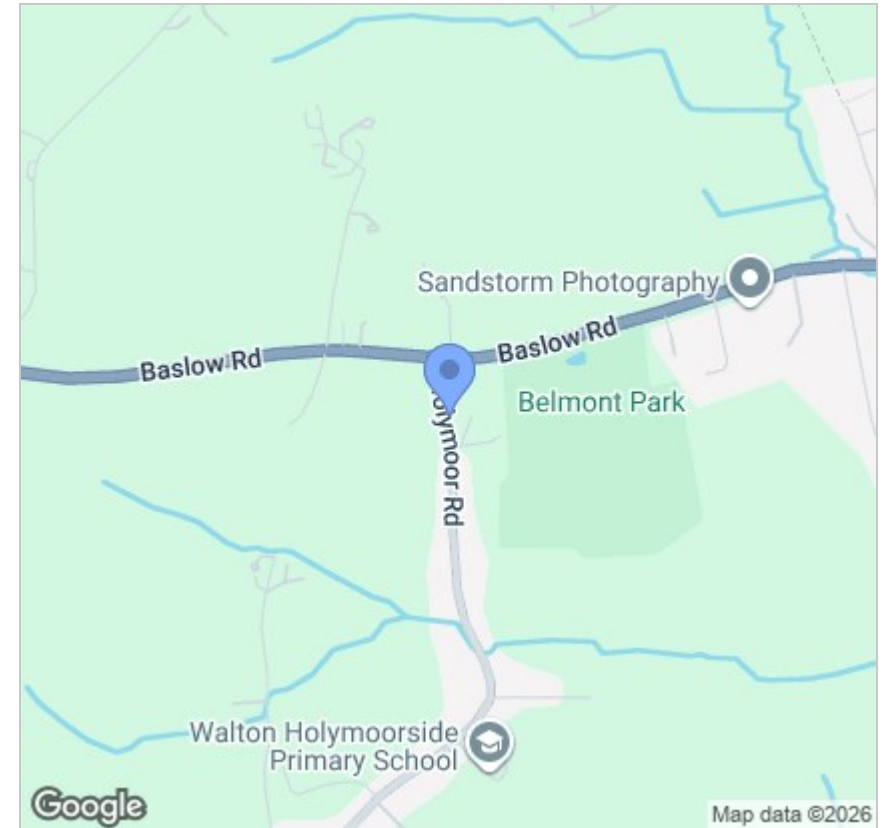


Viewing

Please contact our Chesterfield Office on 01246 567540 if you wish to arrange a viewing appointment for this property or require further information.

These particulars, whilst believed to be accurate are set out as a general outline only for guidance and do not constitute any part of an offer or contract. Intending purchasers should not rely on them as statements of representation of fact, but must satisfy themselves by inspection or otherwise as to their accuracy. No person in this firm's employment has the authority to make or give any representation or warranty in respect of the property.

Area Map



Energy Efficiency Graph

